



## Star Asset Management: Transfer and tracking

**Offshore installations and specialized vessels carry many complex assets that are moved and maintained as functional entities. Star Asset Management is designed to assist in transferring assets and tracking asset deployment across the organization.**

Star Asset Management facilitates efficient removal, shipment, and installation of assets and related information. Assets can be transferred across the fleet, or between vessels and land based destinations such as warehouses and workshops. Asset deployment history is stored for easy tracking.

### **Asset transfer**

Star Asset Management facilitates easy removal and transfer of assets across the organization. The system features a wizard that guides the user through the selection of assets and the creation of shipment manifests. Assets and sub-assets can be selected and deselected item by item, and vessel stores are updated accordingly.

### **Full overview**

Star Asset Management provides full overview of all fleet assets. Data can be sorted and listed to show specific assets and operational status, such as installed at vessel, in warehouse, at workshop, etc.

### **Asset history**

Star Asset Management allows for storage and transfer of important asset details such as work history, scheduled jobs, spare parts, calibrations, specifications, reports, documents, and depreciation details. Details are forwarded to the new destination and incorporated into Star IPS in one simple step. Deployment history is stored for easy tracking.

### **User friendly**

Star Asset Management's graphical user interface facilitates easy learning, understanding and usage. Wizards and terminology used in the system can be configured to match company and industry standards.

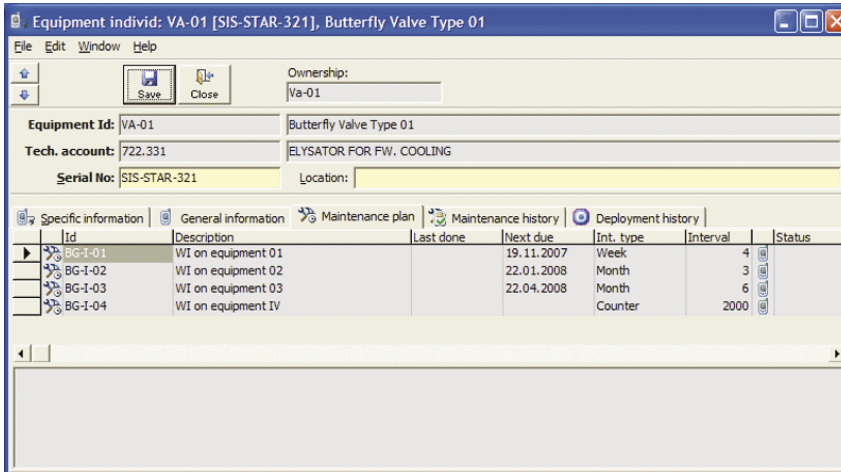
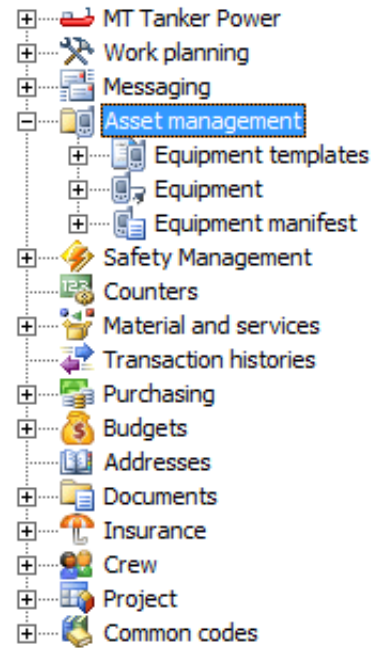
### **Use Star Asset Management to:**

- Organize asset transfers and create shipment manifests
- Gain full overview over fleet assets and statuses
- Track asset deployment and view deployment history
- Transfer important information related to assets and sub-assets
- Keep track of asset depreciation
- Provide reports, statistics, KPIs, and trends
- Replicate data between vessel and office

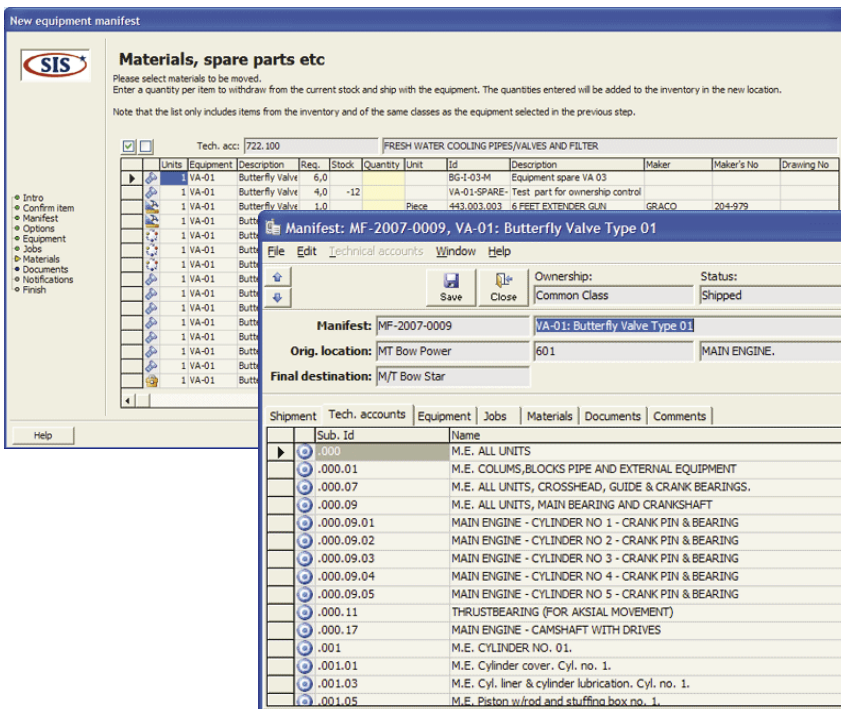


## Replication

Star Asset Management can be used as a stand-alone solution or in interaction with an office based hub for fleet management. Data from the vessel is replicated to the hub using SIS' highly reliable replication engine. When used in the office, Star Asset Management provides full overview of asset deployment across the fleet including detailed information for each vessel. Asset details can be updated and distributed to multiple vessels, and internal messaging and notifications facilitate for knowledge sharing.



Equipment details in Star Asset Management.



A wizard guides the user through the selection of asset and sub-assets, and the creation of a shipment manifest.

## System integration

Star Asset Management can be used as a stand-alone solution or may form part of the integrated Star Information and Planning System (Star IPS). Please refer to the Star IPS brochure for more information. The system further integrates with Star Fleet Dashboard for KPIs and trending.

## Technical data

Star Asset Management runs on Windows XP/Vista/7 workstations. The system uses SQL databases such as Oracle, MS SQL Server, and Sybase.



For more information please contact:

**Star Information Systems**  
 Tel: +47 22 47 69 10  
 E-mail: sales@sismarine.com  
 www.sismarine.com



Star Information Systems